

Borough of Mont Alto



Summary of Residential Rate Comparisons

April 4, 2025

Borough of Mont Alto

Summary of Residential Rate Comparison

Residential Rate Class Comparison
April 2025

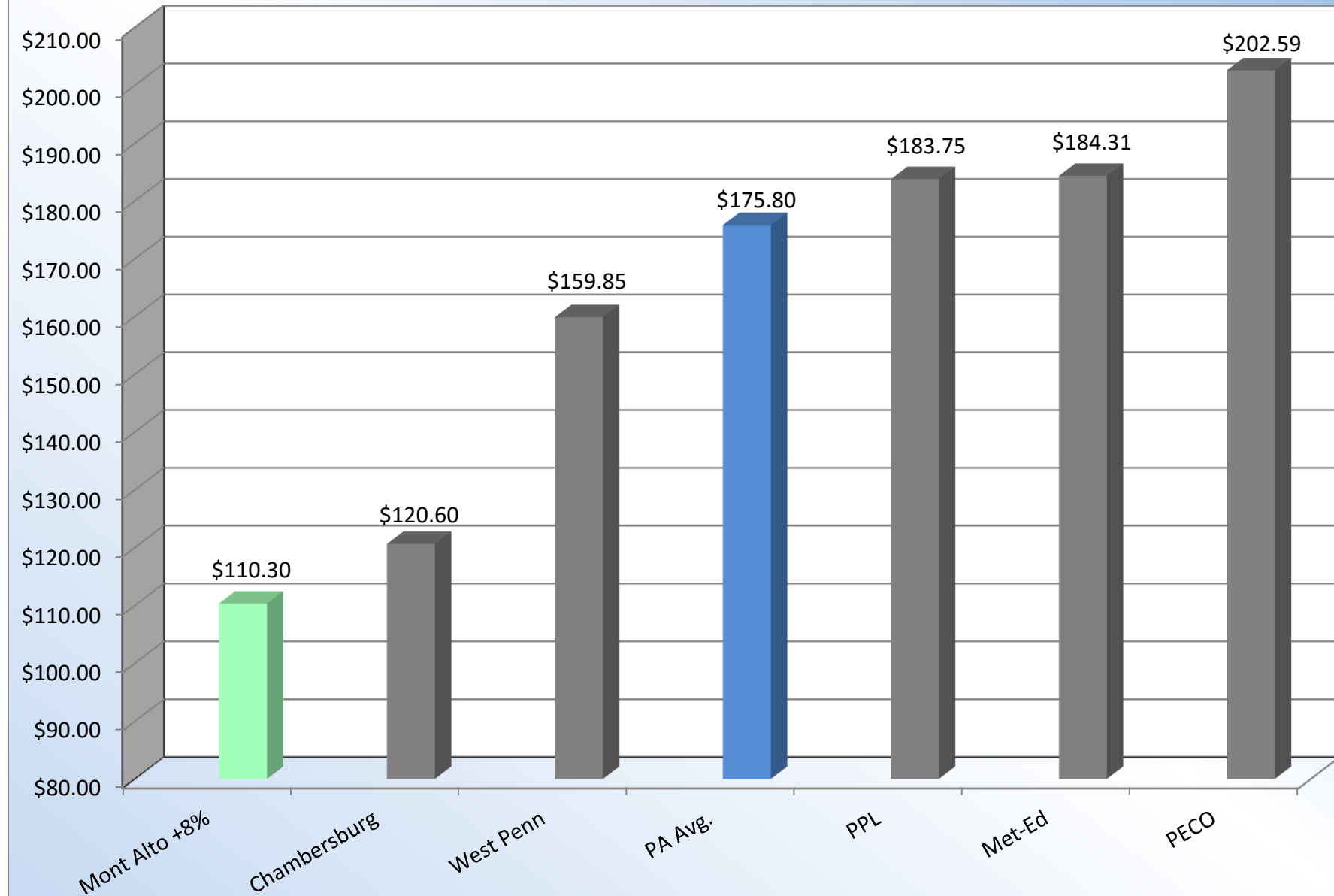
Monthly Cost at 1,000 kWh Average Consumption

	(A)	(B)	(C)
	Average Monthly Bill	<u>Residential Rate Class</u> Above (Below) Mont Alto \$ %	
1 Borough of Mont Alto +8%	\$110.30	-	-
2 Borough of Chambersburg	\$120.60	\$10.30	9.3%
3 West Penn	\$159.85	\$49.55	44.9%
4 Pennsylvania Average ¹	\$175.80	\$65.50	59.4%
5 PPL	\$183.75	\$73.45	66.6%
6 Met-Ed	\$184.31	\$74.01	67.1%
7 PECO	\$202.59	\$92.29	83.7%

Notes

1. Represents the average cost for all Pennsylvanians for the most current month as provided by the Energy Information Agency's "Electric Power Monthly" report for January 2025.

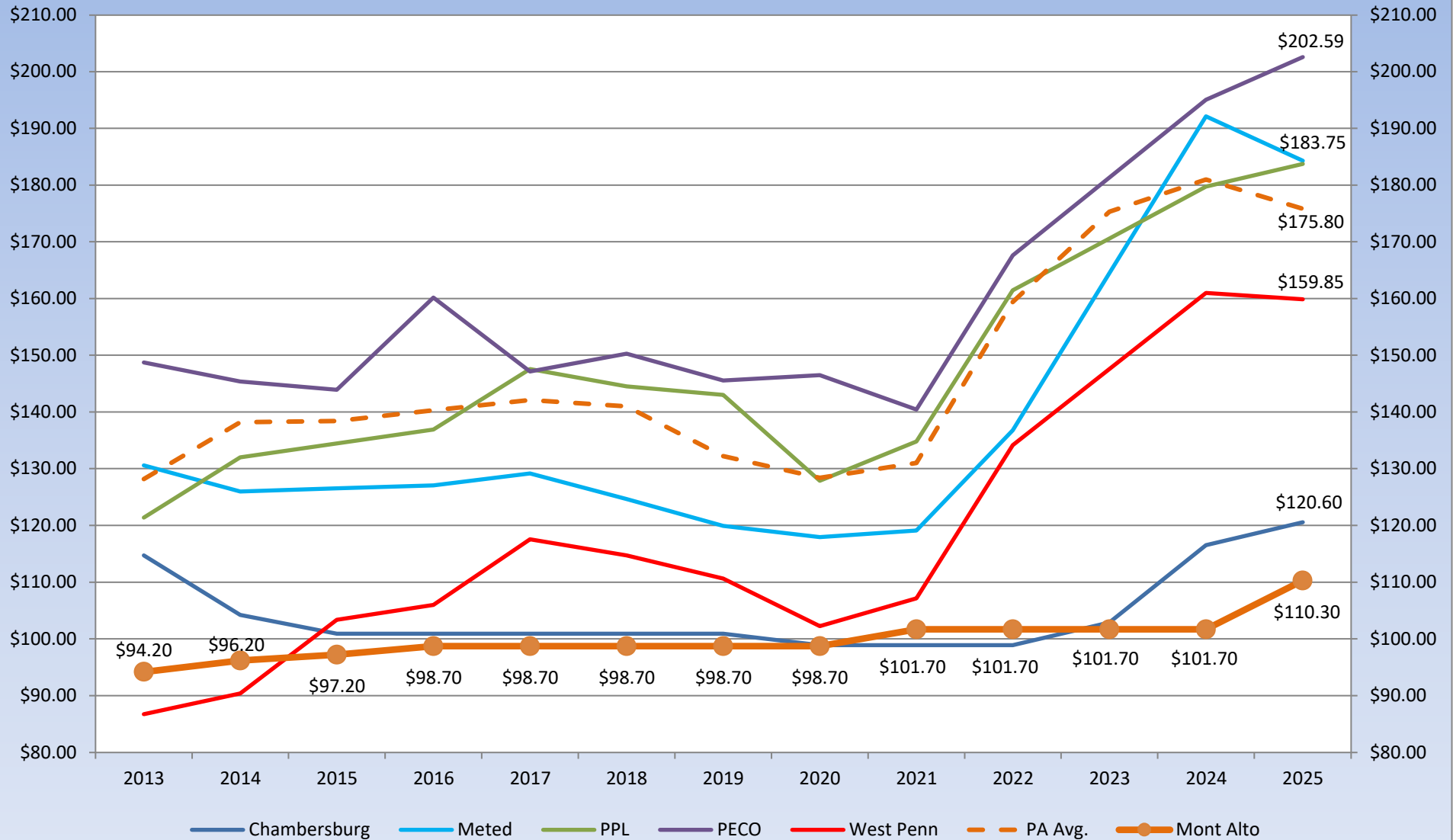
Borough of Mont Alto
Residential Retail Rate Comparison - April 2025
Monthly Cost at 1,000 kWh Average Consumption



Borough of Mont Alto

Average Monthly Residential Price Comparison¹

2013-2025



Note:

1. Average price is based on usage of 1,000 kWh per month and 2025 rates are as of April 1, 2025.